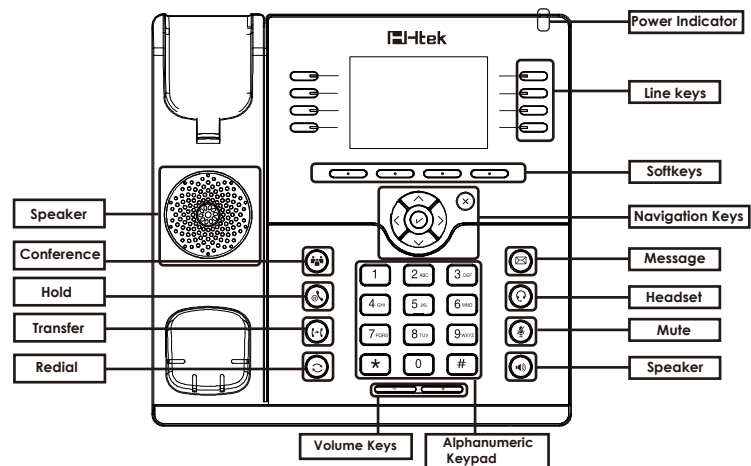


Hardware Overview



LED

Power Indicator: Steady green when power on, blinking green when the call is ringing.

Line Keys: **Steady green:** During the conversation, or plan to dial a call.

Blinking red: The call is ringing.

Off: Idle interface.

Place a call

Three ways to make a call:

Handset: Pick up the handset; enter the number, then press the send soft key or press #.

Speaker: Press or the line keys; enter the number, then press the send soft key or press #.

Headset: Press ; enter the number, then press the send soft key or press #.

Note: You can also use Contacts or call log to dial the number you want, press dial key and place the call by the three ways mentioned. More, you can also alternate the mode during the call.

End a call

To end a call in three different modes:

Handset: Hang up the handset or press the cancel soft key.

Speaker: Press , or press the cancel soft key.

Headset: Press the cancel soft key.

Answer a call

Handset: Pick up the handset.

Speaker: Press .

Headset: Press .

Note: You can also reject the call by press the Reject soft key.

Redial

Press to redial the last call that dialed.

Hold

Press or press the hold soft key during a call to hold the call.

Press or resume soft key to resume the call.

Call Transfer

Blind Transfer

1) Press or transfer soft key during the conversation, the call is on hold now.

2) Enter the number that transfers to.

3) Press or the transfer soft key and now the blind transfer completed.

Attended Transfer (at least one line key set as Auto)

1) Press or transfer soft key during the conversation, the call is on hold now.

2) Enter the number that transfer to and press the send soft key or #.

3) Start the second conversation, press or transfer soft key, then transfer completed.

Semi-Attended Transfer (at least one line key set as Auto)

1) Press or transfer soft key during the conversation, the call is on hold now.

2) Enter the number transfer to, and then press #, then you can hear the ring tone.

3) Press or the Tran soft key and now the Semi-attended transfer completed.

Call Conference

Assuming that A and B are in conversation. A wants to bring C (or D & E) in a conference:

1) A press line 2, the call is placed on hold.

2) A enter the number of C and then press send soft key or # C answers the call.

3) A press or the conference soft key, then A, B and C are now in a conference.

4) If add D&E, press Line 3, the current conference is on hold, dial D and press , the four are in conference. Press line 4, and dial E, press , then A,B,C,D,E are in conference.

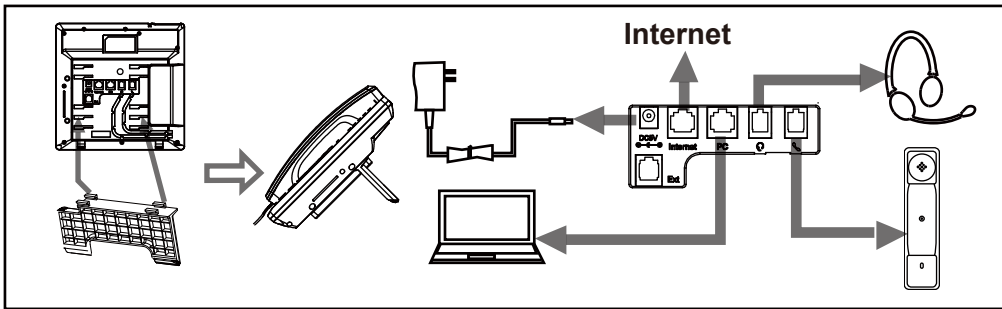
Note: 1) If C does not answer the call, A can back to continue the conversation with B;
2) Once A hangs up the call, the conference is ended, while if B or C drops the call, A&C or A&B conversation continues.

Call Mute

Press to mute the microphone during the call.

Press again to un-mute the conversation.

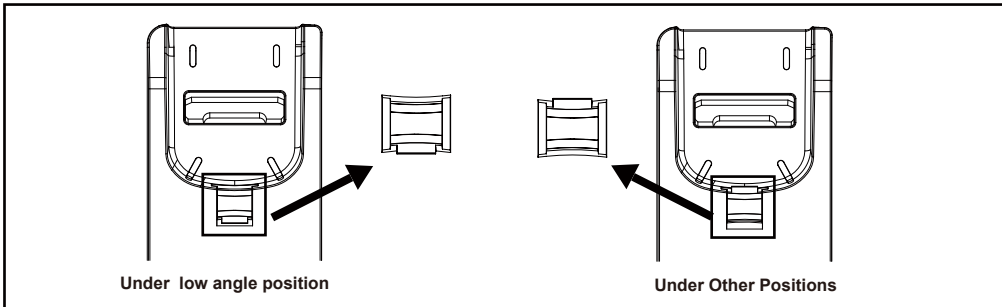
Instruction



Notice

When you want change from the low angle position to other positions.

Please take out the hookswitch then rotate it 180 degrees then slide it back into its groove.



Configuration

Configuration via Phone

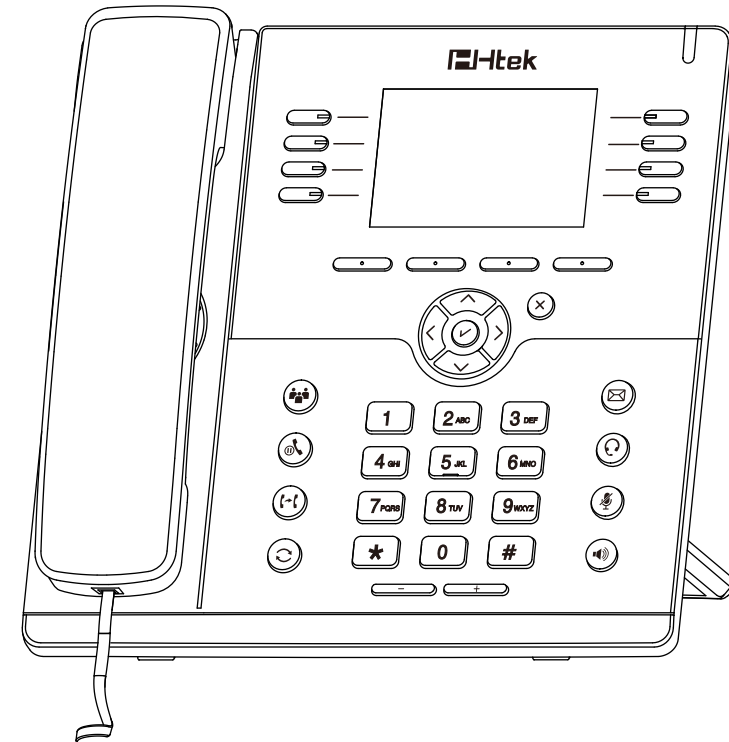
- 1) Press Menu → Setting → Advanced Settings (Default password: admin)
- 2) Select Network: To configure the Wan Port (DHCP/Static/PPPoE), PC Port etc.
- 3) Select Accounts: To configure enable the account; fill the SIP SERVER, Outbound Proxy, ID etc.
- 4) Save the configuration.

Configuration via Web

- 1) Get the IP address from the phone: Press Menu→ Status.
- 2) Login: Input the IP address in the web browser. The PC and phone should be in the same segment (Login name: admin ; Default password: admin)
- 3) Configure: Select network/Account...to fill the relevant content.
- 4) Save the configuration, or if want to reboot, click the reboot button.

Tel: 0086-25-84658050 | Fax: 0086-25-84658319 | Mail: support@htek.com | Web: www.htek.com
Add: 5th Floor, 1st Building Huashen Tech Park10 Huashen Temple Yuhuatai Dis Nanjing 210012 China
Copyright: © Nanjing Hanlong Technology Co., Ltd. 2005-2017 All rights reserved.

IP Phone



Quick Reference For UC924